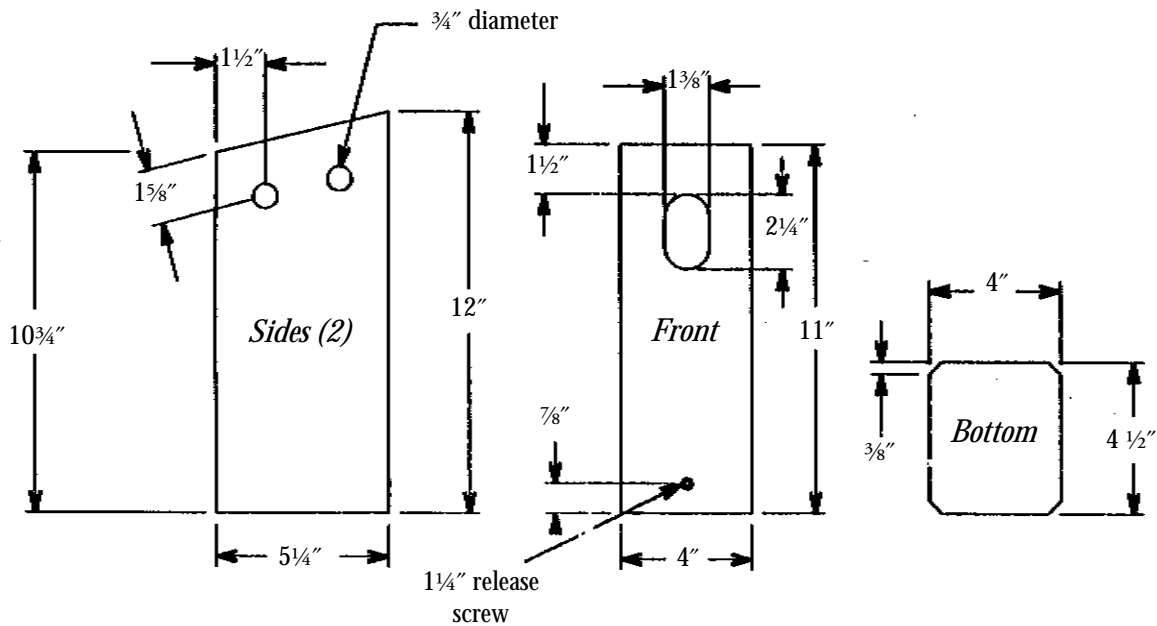
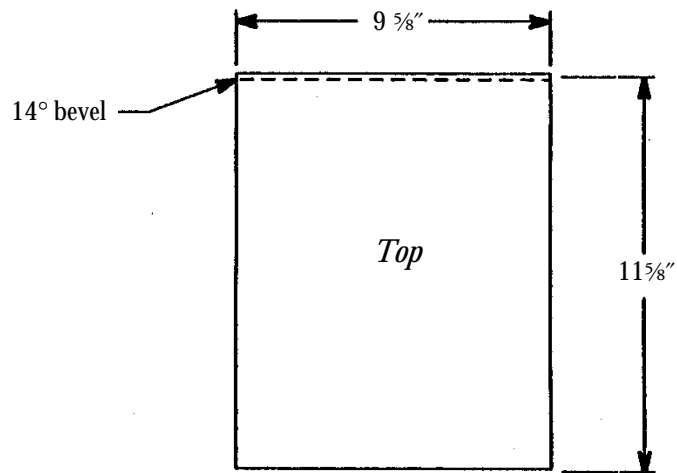
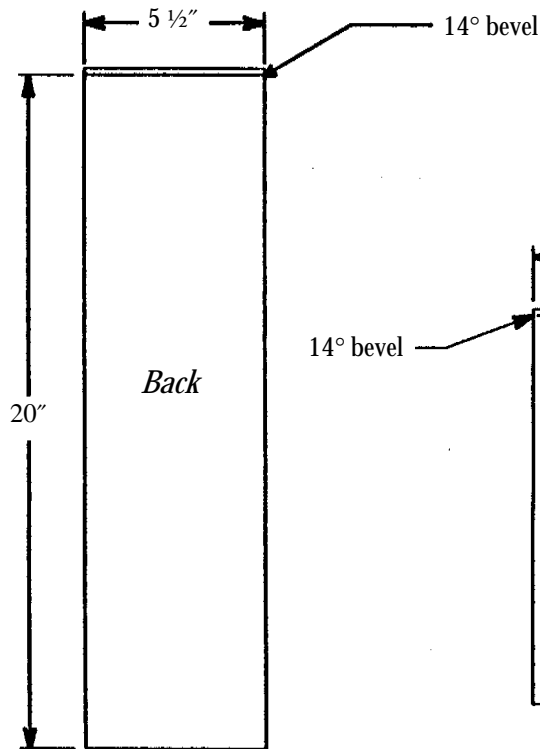
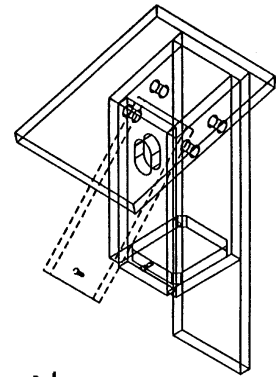


# A Nest-Box Plan for Cavity-Nesting Songbirds

(flycatchers, swallows, titmice, chickadees, nuthatches, wrens, and bluebirds)



All wood in the design is 3/4" actual thickness. The pictured entrance hole is recommended for bluebirds. To adapt the nest box for individual species, change the dimensions of the entrance hole. Visit <http://birds.cornell.edu/birdhouse> for guidelines on entrance hole sizes.